





211 Chesterfield Road

Dronfield • Derbyshire • S18 1XH

Asking Price £90,000

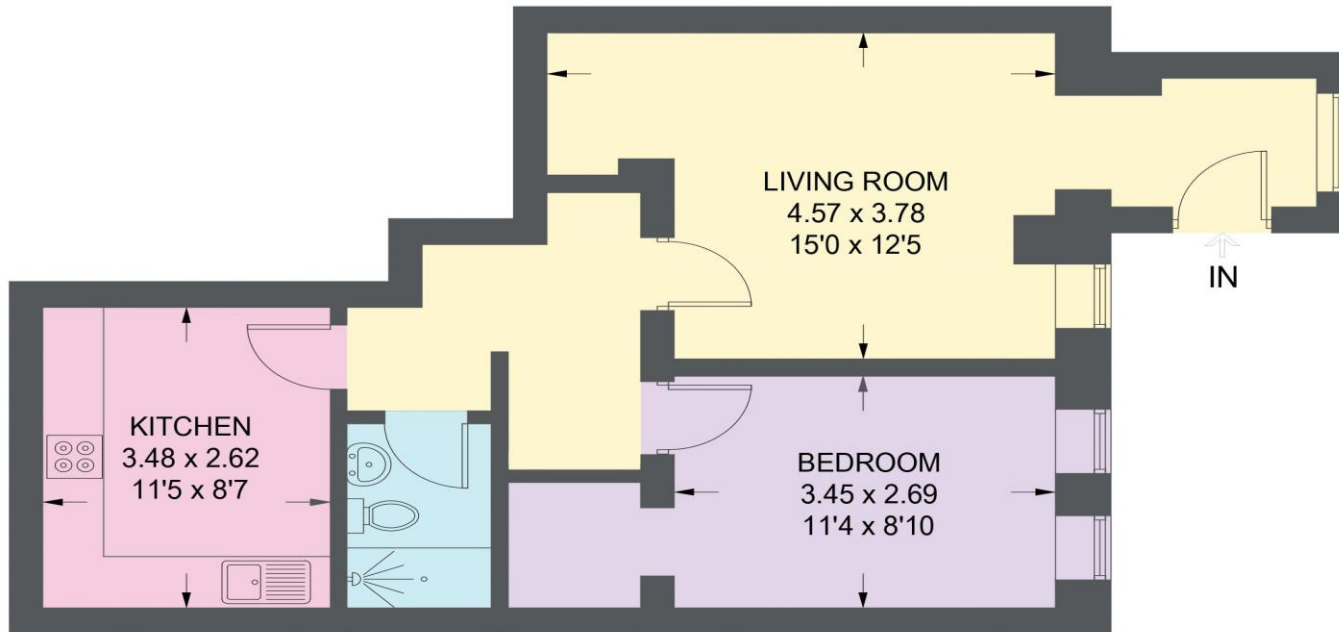
A well-proportioned 1-bedroom lower ground floor apartment in Dronfield, S18. Features a private entrance, light and airy lounge, generous dining kitchen and double bedroom incorporating walk in wardrobe. Benefits from allocated parking, communal garden, gas central heating and double glazing. Available with no onward chain. The property will be of particular interest to first time buyers or Investors. Entered through a private entrance into a tiled porch. The light and airy lounge overlooks the communal garden presented in neutral tones and grey carpets. Benefiting from the same aspect is the generous double bedroom featuring two rear facing windows and walk in wardrobe. A modern shower room is fully tiled equipped with shower cubicle, hand wash basin, WC and heated towel rail. The kitchen is fitted with contemporary cream gloss units, contrasting worktops and tiled splashbacks. Integrated appliances include an oven, with four ring gas hob, providing space with plumbing for appliances, finished with a stylish tiled floor and downlights. Chesterfield Road enjoys the facilities of schools, shops, public transport and has excellent access to Sheffield, Chesterfield, M1 Motorway and delightful Derbyshire countryside. Service charge is £50 a month, which covers building maintenance and communal areas. Lease 200 years 29/09/1990



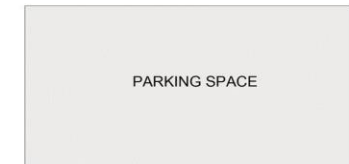
- Lower Ground Floor Apartment
- Double Bedroom & Walk in Wardrobe
- Spacious Lounge
- Modern Dining Kitchen
- Communal Garden
- Allocated Parking Space
- EPC Rating D
- Service Charge £50 pcm
- Lease 200 years from 29/09/1990
- Council Tax Band A

211 CHESTERFIELD ROAD

APPROXIMATE GROSS INTERNAL AREA = 51.3 Q M / 552 SQ FT



GROUND FLOOR



(NOT SHOWN IN ACTUAL
LOCATION / ORIENTATION)

Illustration for identification purposes only, measurements are approximate, not to scale.

IMPORTANT: we would like to inform prospective purchasers that these sales particulars have been prepared as a general guide only. A detailed survey has not been carried out, nor the services, appliances and fittings tested. Room sizes should not be relied upon for furnishing purposes and are approximate. If floor plans are included, they are for guidance only and illustration purposes only and may not be to scale. If there are any important matters likely to affect your decision to buy, please contact us before viewing the property.